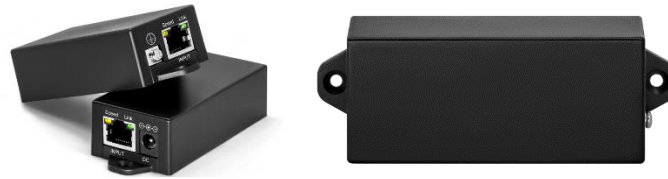


Data sheet



Model	SL-PSE1001EX & PE2301G
Product	1 in 1 out Gigabit Poe network extender
Supporting instructions	Use with POE switch
Fixed port	1*10 / 100/1000M RJ45 Poe power receiving input port 1*10 / 100/1000M RJ45 Poe power supply output ports
Poe In port	Support ieee802.3af/at Poe in MAX 30W; Support 40-57v passive Poe in
PoE Pin	1245+ 3678-
Poe extender distance	Poe in+ Poe out 10/100/1000M type, max distance 150+150 meters, max power out 30W
Supporting power supply	1: default configuration is no power 2: Optional 52V 1.25A power can be used as a single port Poe switch
Watt	Standby Power Consumption : ≤0.5W
DC Input	As PoE Network Extender : DC37-57V MAX 0.6A
LED Indicator	Link: Lan network on link Speed: Lan speed 100M
Network Protocol	Supports IEEE 802.3az-2010 (EEE) 1000BASE-T IEEE 802.3ab 100Base-TX IEEE 802.3u Compliant 10Base-T IEEE 802.3 Compliant IEEE 802.3af/at
Transmission Mode	Direct forwarding (full wirespeed)
Operating Temperature/Humidity	-10 ~ +55°C ; 5% ~ 90% RH Non coagulation
Storage Temperature/Humidity	-40 ~ +75°C ; 5% ~ 95% RH Non coagulation
Product size (L*W*H)	112mm*41mm*26mm
N.W/G.W (kg)	0.15kg(1 pairs)
Installation	Desktop, wall mounted
Lightning protection level	3KV 8/20us ; IP30
Certificate	CE mark, commercial ; CE/LVD EN60950 ; FCC Part 15 Class B ; RoHS ; KC

Data sheet

Warranty	무상 1 년, 유상 2 년
----------	----------------